

# ***Custom Landscape Proposal for Mr. & Mrs. Jim Brown***



January 03, 2005

*Timber Pine Landscaping*

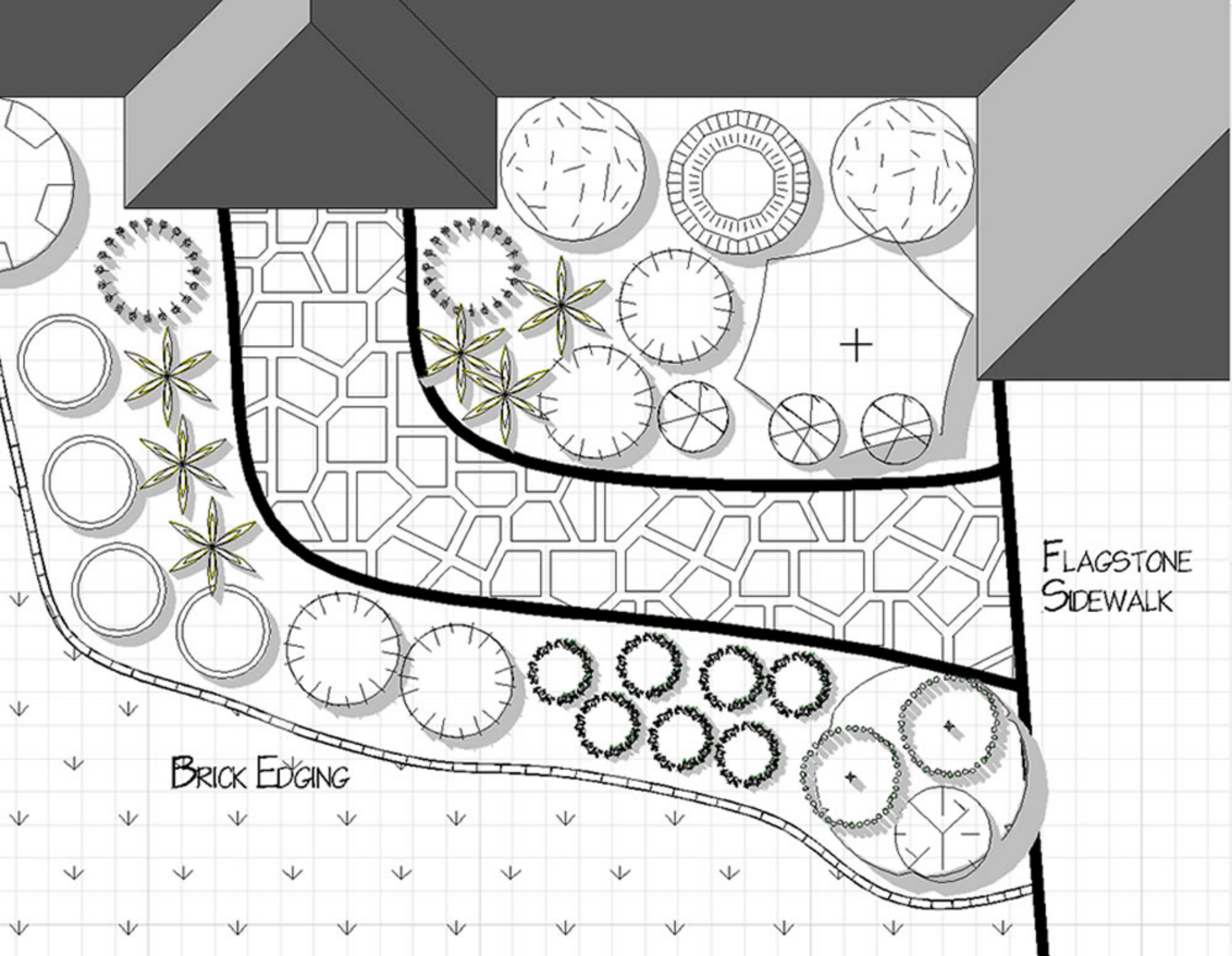
*114A West 3rd Street, 114A West 3rd Street*

*Kansas City, MO 64105*

*800-231-8574*







BRICK EDGING

FLAGSTONE SIDEWALK

Timber Pine Landscaping  
 114A West 3rd Street, Suite 301  
 Kansas City, MO 64105  
 800-231-8574



## Quote

**Customer:**

Jim Brown  
 12321 Elm  
 Overland, TN 33701  
 555-555-5555



**Customer Number:** 120  
**Quote Date:** January 03, 2005  
**Expiration Date:** February 03, 2005  
**Proposal #:** 2004-153

SKU	Size/ Unit	Description	Quantity	Unit Price	Extended Price
SHR103a	3'-4'	Spruce, Alberta	1.00	\$155.00	\$155.00
TRE593-F	2"	Plum, Autumn Flowering	1.00	\$325.00	\$325.00
SHR593-F	5 Gal.	Hydrangea	1.00	\$65.00	\$65.00
SHR174-G	5 Gal.	Rhododendren, PJ	2.00	\$75.00	\$150.00
SHR562-G	1 Gal.	Liriope	7.00	\$17.00	\$119.00
SHR182-G	5 Gal.	Juniper, Blue Chip	6.00	\$75.00	\$450.00
FLO451	1 Gal.	Daylily, Stella	7.00	\$17.00	\$119.00
FLO308	1 Gal.	Hosta, Francee	3.00	\$17.00	\$51.00
SHR174-G	5 Gal.	Holly, Blue Princess	1.00	\$75.00	\$75.00
SHR562-G	7 Gal.	Grafted Tree Lilac	1.00	\$250.00	\$250.00
SHR182-G	1 Gal.	Coreopsis, Moonbeam	4.00	\$27.00	\$108.00
SHR451	5 Gal.	Spirea, Little Princess	2.00	\$45.00	\$90.00
SHR182-G	5 Gal.	Globe Blue Spruce	1.00	\$260.00	\$260.00
MUL174	Cu. Yd.	Mulch	4.00	\$65.00	\$260.00
EDG020	Lin Ft.	Brick Edging	47.00	\$6.50	\$305.50
FLGSTN001	Sq Ft.	Flagstone Sidewalk	85.00	\$9.50	\$807.50
LIGHT075	Each	Kichler 15026vgt	8.00	\$175.00	\$1,400.00
PREP02	Each	Bed Prep	400.00	\$0.45	\$180.00

Limited Warranty: We will supply once, at 1/2 the purchase price any tree, shrub, vine or evergreen (no other plants guaranteed) that fails to survive the first year after planting, provided plants have received proper care and payment of the bill has been made when due. Shade trees and deciduous shades, when planted dormant are guaranteed to leaf out. All accounts are due on the first of the month following purchase, otherwise a 2% carrying charge per month is added to all past due accounts (annual rate of 24%). Labor is not warranted.

<b>Taxable:</b>	<b>\$5,170.00</b>
<b>Tax:</b>	<b>\$389.04</b>
<b>Total:</b>	<b>\$5,559.04</b>

# Material List

Timber Pine Landscaping  
 114A West 3rd Street, 114A West 3rd Street  
 Kansas City, MO 64105  
 800-231-8574



**Customer:**

Jim Brown  
 12321 Elm  
 Overland, TN 33701  
 555-555-5555

**Customer Number:**

120

**Quote Date:**

January 03, 2005

**Sales Person:**

Lisa

**Proposal Name:**

Brown - Phase 1

**Project Name:**

2005 Collage-chris 2 12-17

**Proposal #:**

2004-153

SKU	Size/ Unit	Description	Quantity	<input checked="" type="checkbox"/>
SHR103a	3'-4'	Spruce, Alberta	1.00	<input type="checkbox"/>
TRE593-F	2"	Plum, Autumn Flowering	1.00	<input type="checkbox"/>
SHR593-F	5 Gal.	Hydrangea	1.00	<input type="checkbox"/>
SHR174-G	5 Gal.	Rhododendren, PJ	2.00	<input type="checkbox"/>
SHR562-G	1 Gal.	Liriope	7.00	<input type="checkbox"/>
SHR182-G	5 Gal.	Juniper, Blue Chip	6.00	<input type="checkbox"/>
FLO451	1 Gal.	Daylily, Stella	7.00	<input type="checkbox"/>
FLO308	1 Gal.	Hosta, Francee	3.00	<input type="checkbox"/>
SHR174-G	5 Gal.	Holly, Blue Princess	1.00	<input type="checkbox"/>
SHR562-G	7 Gal.	Grafted Tree Lilac	1.00	<input type="checkbox"/>
SHR182-G	1 Gal.	Coreopsis, Moonbeam	4.00	<input type="checkbox"/>
SHR451	5 Gal.	Spirea, Little Princess	2.00	<input type="checkbox"/>
SHR182-G	5 Gal.	Globe Blue Spruce	1.00	<input type="checkbox"/>
MUL174	Cu. Yd.	Mulch	4.00	<input type="checkbox"/>
EDG020	Lin Ft.	Brick Edging	47.00	<input type="checkbox"/>
FLGSTN001	Sq Ft.	Flagstone Sidewalk	85.00	<input type="checkbox"/>
LIGHT075	Each	Kichler 15026vgt	8.00	<input type="checkbox"/>
PREP02	Each	Bed Prep	400.00	<input type="checkbox"/>

**Total Quantity**

**581.00**

## Plum, Autumn Flowering

*Prunus triloba*



<b>Classification:</b>	Tree, Deciduous
<b>Height:</b>	15'
<b>Width:</b>	15'x15'
<b>Color</b>	Pink flowers with red fruit
<b>Flower Color:</b>	Pink
<b>Flower Season:</b>	Spring
<b>Sun:</b>	Full Sun, Light Shade
<b>Soil:</b>	Almost any, well-drained
<b>Climate Zones:</b>	4,5,6,7,8
<b>Care Information:</b>	

**Description:** Requires regular pruning.

---

## Holly, Blue Princess

*Ilex x meserveae 'Blue Princess'*



<b>Classification:</b>	Shrub, Evergreen Broadleaf
<b>Height:</b>	15'
<b>Width:</b>	10-15' x 6-10'
<b>Color</b>	Red fruits
<b>Flower Color:</b>	Red, Blue
<b>Flower Season:</b>	Spring, Late Spring, Early Summer, Summer, Late Summer, Early Fall, Fall
<b>Sun:</b>	Full Sun, Full Shade, Light Shade
<b>Soil:</b>	Almost any, moist yet well-drained
<b>Climate Zones:</b>	4,5,6,7,8
<b>Care Information:</b>	

**Description:** Spreading, semi-evergreen to evergreen shrub grows to height and spread of 4-5' in 5-6 years. Small, toothed, blue-green leaves. Plant near male blue holly for adequate pollination. Clusters of fruit ripen late in season. Berry production best in full sun. Mulch rather than cultivate around plants. Pruning rarely needed; trim for neatness. Grow as specimen or accent, or in group plantings.

## Juniper, Blue Chip

*Juniperus horizontalis 'blue chip'*



<b>Classification:</b>	Shrub, Evergreen Conifer
<b>Height:</b>	12"
<b>Width:</b>	9-12" x 8-10'
<b>Color</b>	Silvery blue
<b>Flower Color:</b>	Blue
<b>Flower Season:</b>	Early Spring, Spring, Late Spring, Early Summer, Summer, Late Summer, Early Fall, Fall, Late Fall
<b>Sun:</b>	Full Sun, Light Shade
<b>Soil:</b>	Almost any, well-drained
<b>Climate Zones:</b>	4,5,6,7,8
<b>Care Information:</b>	

**Description:** Spreading, prostrate shrub holds color all year, has purplish tips in cold winters. Tolerates dry, rocky, acid and alkaline conditions. Pruning rarely needed. Trim to guide spread, cutting shoots beneath existing live branches so cut ends don't show. Grow in border, patio, rock garden, container, as edging, ground cover, on slopes and banks.

---

## Spruce, Globe Colorado

*Picea pungens 'Glauca Globosa'*



<b>Classification:</b>	Shrub, Evergreen Conifer
<b>Height:</b>	36"
<b>Width:</b>	3'X3'
<b>Color</b>	Blue gray needles.
<b>Flower Color:</b>	Blue
<b>Flower Season:</b>	Early Spring, Spring, Late Spring, Early Summer, Summer, Late Summer, Early Fall, Fall, Late Fall
<b>Sun:</b>	Full Sun, Light Shade
<b>Soil:</b>	Moist, rich, well-drained
<b>Climate Zones:</b>	3,4,5,6,7,8
<b>Care Information:</b>	

**Description:** Globe Blue Spruce is globe-shaped with blue gray needles. Great as a foundation plant or as an accent plant. Slow growth rate.

## Coreopsis, Threadleaf

*Coreopsis verticillata 'Zagreb'*



<b>Classification:</b>	Flower, Perennial
<b>Height:</b>	18"
<b>Width:</b>	18"
<b>Color</b>	Bright yellow, daisy-like flowers
<b>Flower Color:</b>	Yellow
<b>Flower Season:</b>	Late Spring, Early Summer, Summer, Late Summer
<b>Sun:</b>	Full Sun
<b>Soil:</b>	Dry to medium wet, well drained
<b>Climate Zones:</b>	3,4,5,6,7,8,9
<b>Care Information:</b>	

**Description:** Threadleaf coreopsis typically grows in dense, bushy clumps to 1-3' tall. 'Zagreb' is more compact and features bright yellow, daisy-like flowers with untoothed rays and darker yellow center disks. Flowers appear singly in loose clusters in a lengthy late spring to late summer bloom period which sometimes extends to first frost.

---

## Daylily, Stella

*Hemerocallis hybrid*



<b>Classification:</b>	Flower, Perennial
<b>Height:</b>	36"
<b>Width:</b>	36"X36"
<b>Color</b>	Yellow, Orange, Red, Pink, Lavender, and Bicolors
<b>Flower Color:</b>	Red, Yellow, Pink, Orange, Lavender
<b>Flower Season:</b>	Summer
<b>Sun:</b>	Full Sun, Full Shade, Light Shade
<b>Soil:</b>	Well-drained, loam soil high in organic matter
<b>Climate Zones:</b>	3,4,5,6,7,8,9,10
<b>Care Information:</b>	

**Description:** Great in borders or mixed beds. Can be used as a cut flower, although blooms only last one day, hence the name.

---



## Hosta, Francee

*Hosta 'Francee'*



<b>Classification:</b>	Flower, Perennial
<b>Height:</b>	36"
<b>Width:</b>	30-36" x 36-60"
<b>Color</b>	Lavender blossom; rich green leaves with white edges
<b>Flower Color:</b>	White, Lavender
<b>Flower Season:</b>	Spring, Late Spring, Early Summer, Summer, Late Summer, Early Fall, Fall
<b>Sun:</b>	Full Sun, Light Shade
<b>Soil:</b>	Moist, rich and well drained
<b>Climate Zones:</b>	3,4,5,6,7,8,9
<b>Care Information:</b>	

**Description:** Reliable leafy perennial has big, smooth leaves whose rich coloring holds up hot sun. Flower clusters rise above foliage. Trim off spent flower stems. Useful for edging, low hedge, groundcover, border accent, containers, among shrubs and trees.

---

## Lilac, Tree

*Syringa reticulata*



<b>Classification:</b>	Tree, Deciduous
<b>Height:</b>	30'
<b>Width:</b>	30'X25'
<b>Color</b>	White
<b>Flower Color:</b>	White
<b>Flower Season:</b>	Spring
<b>Sun:</b>	Full Sun, Light Shade
<b>Soil:</b>	Loose, slightly acidic, well-drained
<b>Climate Zones:</b>	3,4,5,6,7
<b>Care Information:</b>	

**Description:** Japanese Tree Lilac has dark green leaves with clusters of white flowers that bloom in spring. These fragrant trees make great street, solo, or accent trees. Medium growth rate.

---

## Liriope, Big Blue

*Liriope spicata*



<b>Classification:</b>	Flower, Perennial
<b>Height:</b>	12"
<b>Width:</b>	12"X6"
<b>Color</b>	White
<b>Flower Color:</b>	White
<b>Flower Season:</b>	Summer
<b>Sun:</b>	Full Shade, Light Shade
<b>Soil:</b>	Well-drained, moist, humus-rich, acid
<b>Climate Zones:</b>	4,5,6,7,8,9,10
<b>Care Information:</b>	

**Description:** Short, dense spikes of flowers that follow with ornamental black fruit in the winter months. Great as a ground cover or edging in beds. Very dense and helps block out weeds

---

## Rhododendron PJM

*Rhododendron 'Compact Briggs'*



<b>Classification:</b>	Shrub, Evergreen Broadleaf
<b>Height:</b>	6'
<b>Width:</b>	3-6' x 3-6'
<b>Color</b>	Pink
<b>Flower Color:</b>	Pink
<b>Flower Season:</b>	Spring
<b>Sun:</b>	Full Shade, Light Shade
<b>Soil:</b>	Moist, well-drained, acid (pH 4.5-5.5)
<b>Climate Zones:</b>	4,5,6,7,8
<b>Care Information:</b>	

**Description:** Rounded shrub has clusters of dainty blossoms. One- to three-inch leathery leaves are dark green in summer, turn deep purple in fall-winter. Mulch to retain moisture for surface roots. Protect from drying winds. Prune individual stems to shape. Remove faded flowers with shoot tips only so buds can develop for next year's flowers. Plant in shrub border, group, light woodland, as accent, informal hedge or screen.

## Spiraea, Little Princess 3

*Spiraea, japonica 'Little Princess'*



<b>Classification:</b>	Shrub, Deciduous
<b>Height:</b>	36"
<b>Width:</b>	2'X3'
<b>Color</b>	Pink
<b>Flower Color:</b>	Pink
<b>Flower Season:</b>	Early Summer, Summer, Late Summer
<b>Sun:</b>	Full Sun, Full Shade, Light Shade
<b>Soil:</b>	Any well-drained soil
<b>Climate Zones:</b>	5,6,7,8,9
<b>Care Information:</b>	

**Description:** Little Princess has dark green leaves that are bronze when young. Produces attractive small heads of pink blooms all summer. Makes an excellent hedge or foundation plant. Medium growth rate.

---